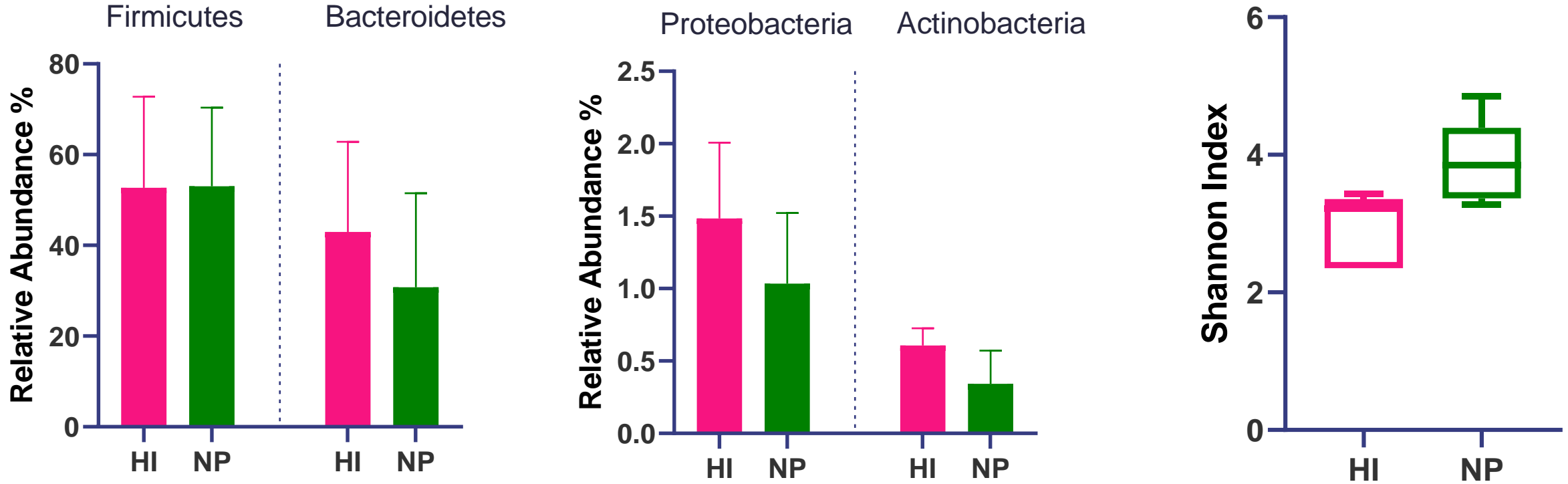


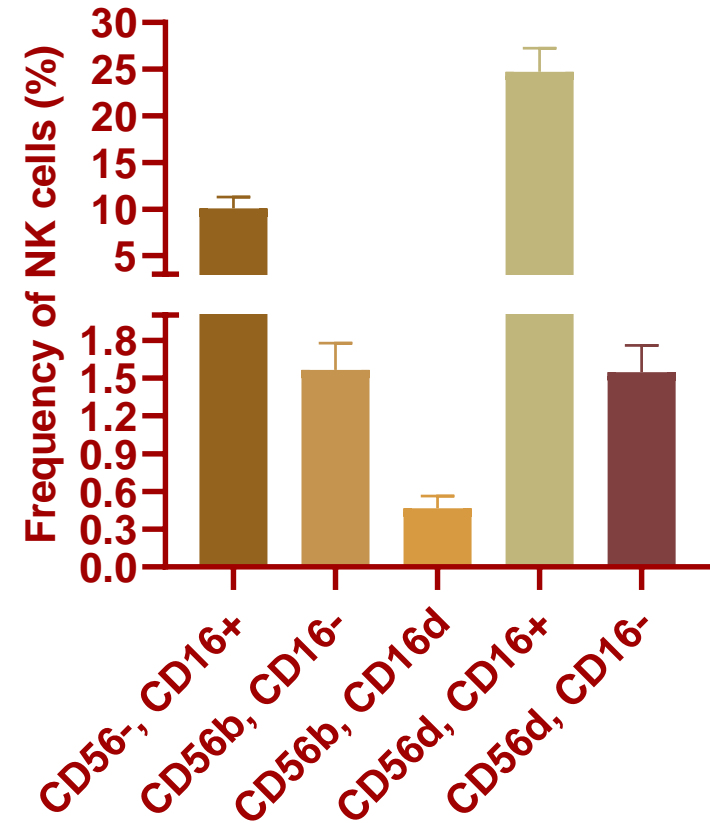
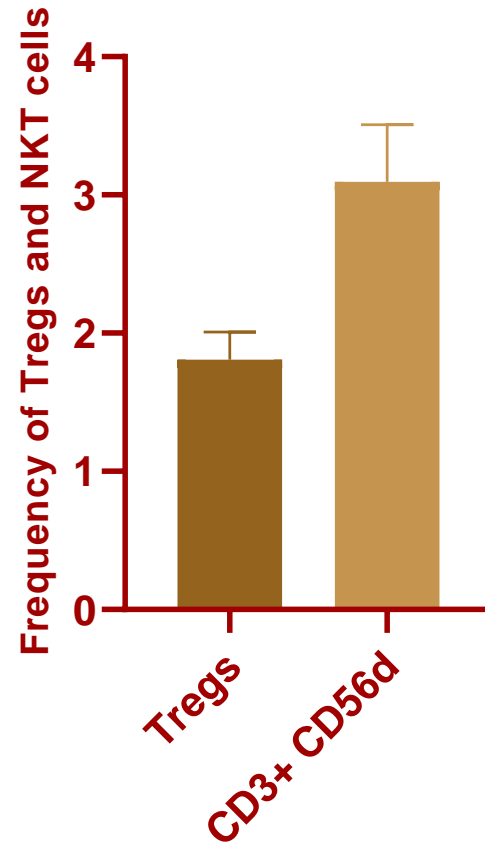
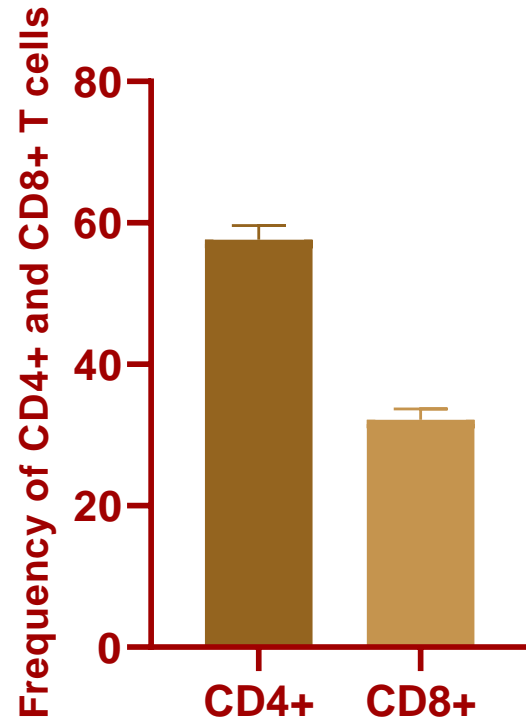
# Taxonomic classification at the Phylum level: 1<sup>st</sup> Trimester



**HI: 1<sup>st</sup> trimester (N=20)**  
**NP: Non pregnant (N=10)**

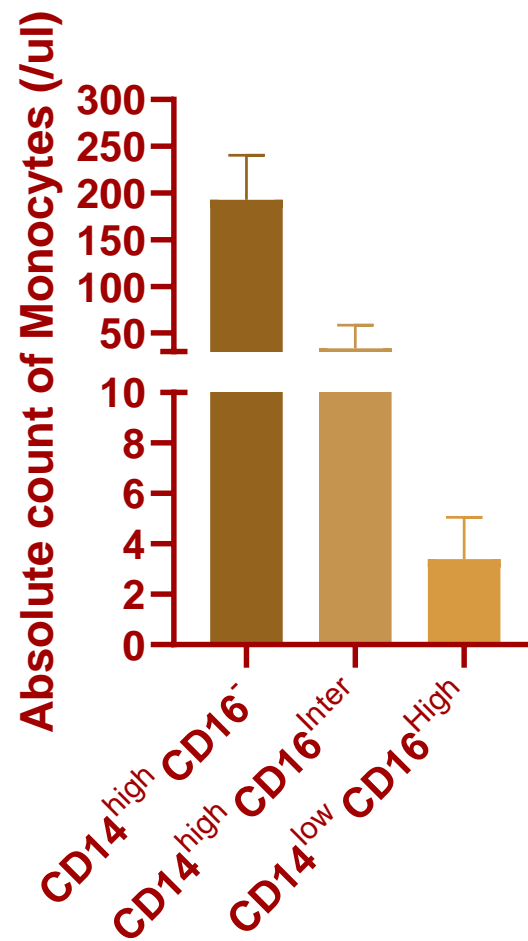
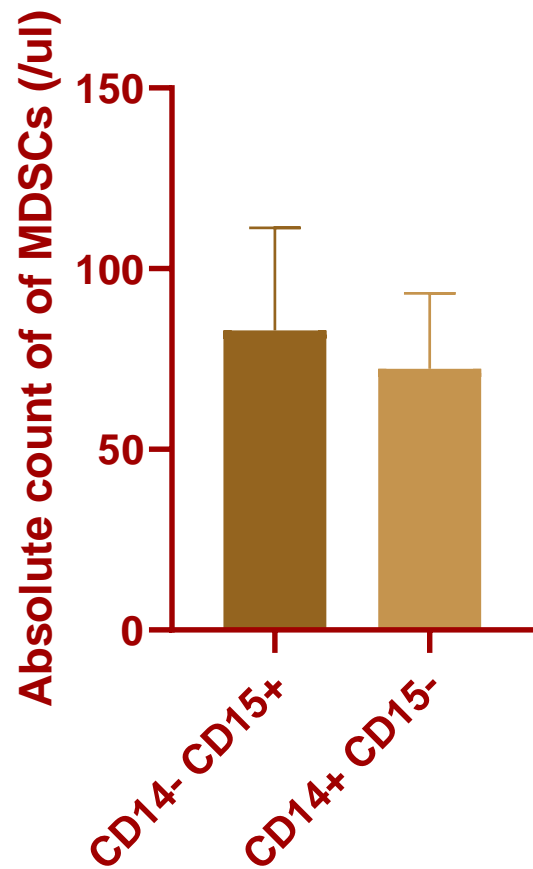
Comparisons were performed using nonparametric t-test  
p-value < 0.05 (\*p < 0.05; \*\*p < 0.01; \*\*\*p < 0.001)

# Frequency of Immune cells in the First trimester of Healthy Pregnant women



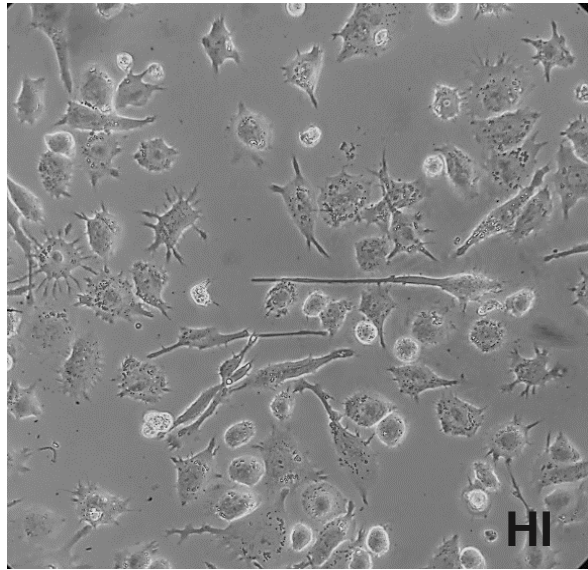
N=20

# Absolute count of Innate cells in the First trimester of Healthy Pregnant women



N=20

# Differential potential of trimester wise stool supernatant on THP1 cells



HI

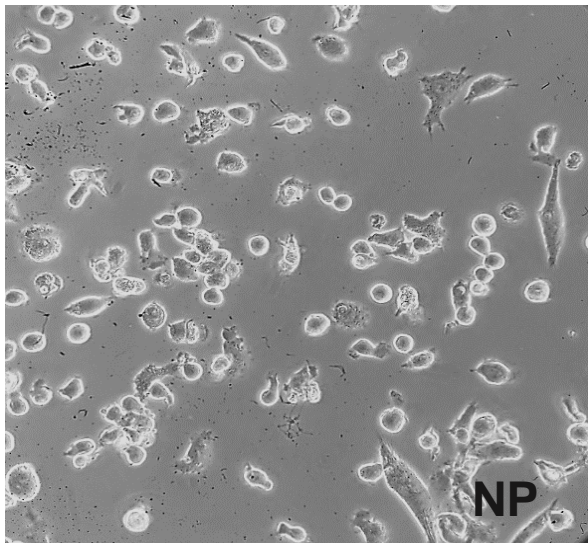
Fig: Morphological differentiation of THP1 cells upon treatment of stool supernatant.

**HI: 1<sup>st</sup> trimester stool supernatant supernatant**

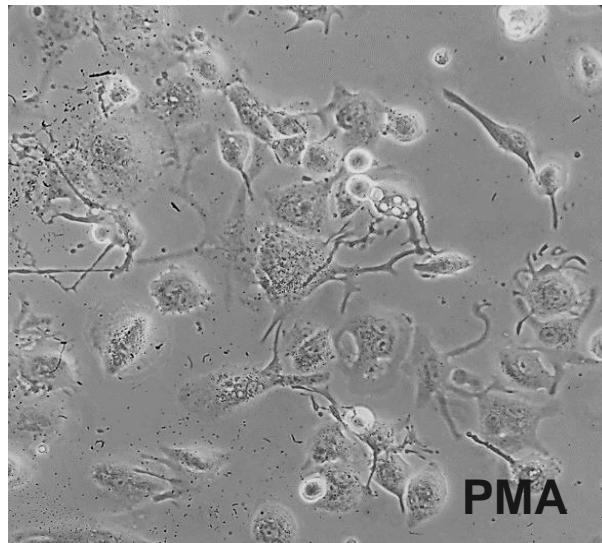
**NP: Non pregnant**

**P=29**

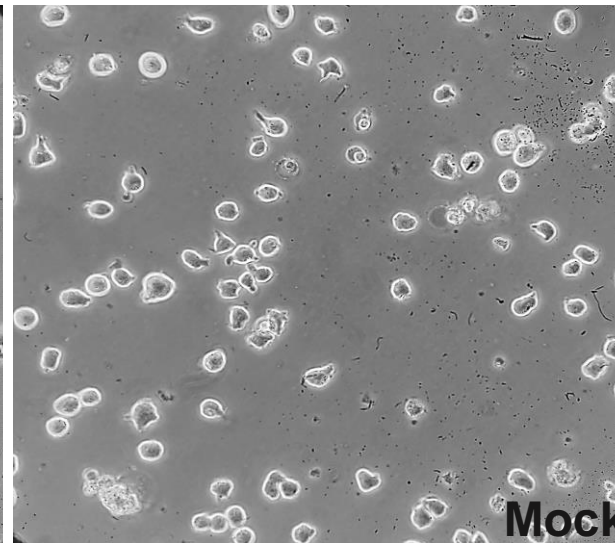
**All images were taken at 40X**



NP

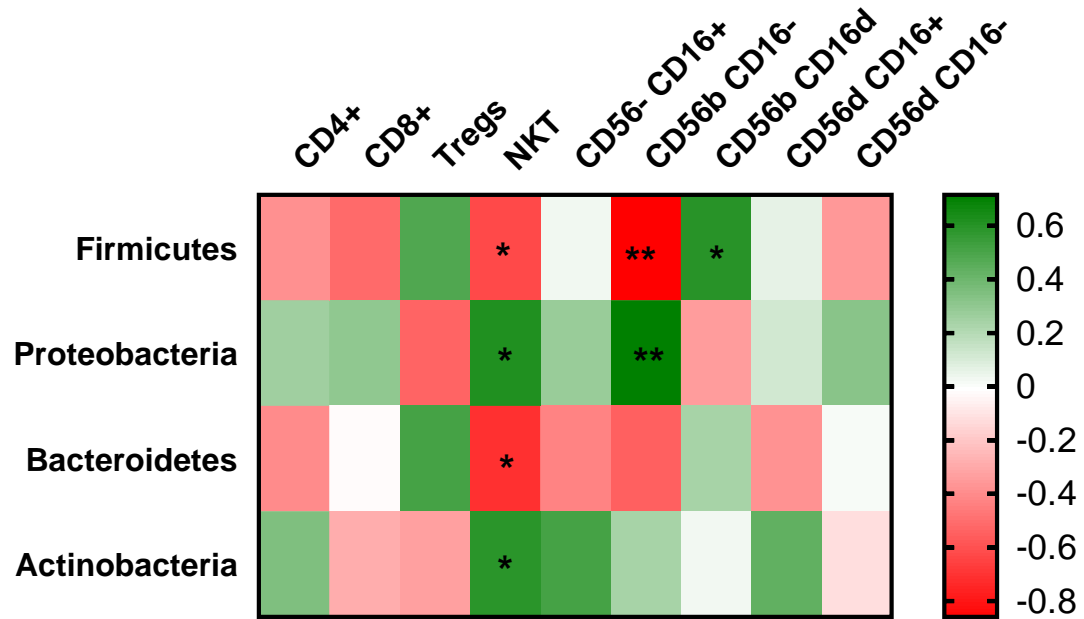


PMA

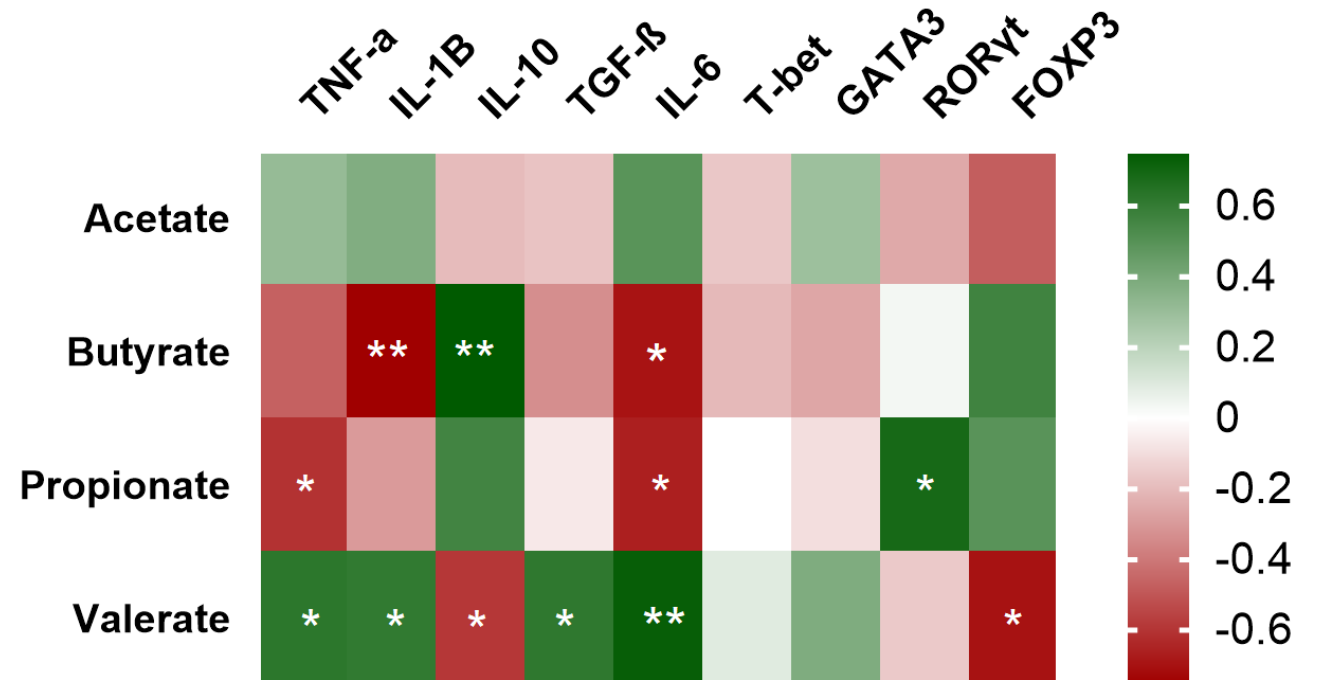


Mock

# Microbiome Immune correlation



Correlation analysis between relative abundances at Phylum level & frequency of immune cells



Correlation analysis between SCFAs level in stool supernatant of pregnant women & mRNA expression of THP1 and HuT 78 cells upon treatment of stool supernatant and conditioned media respectively.